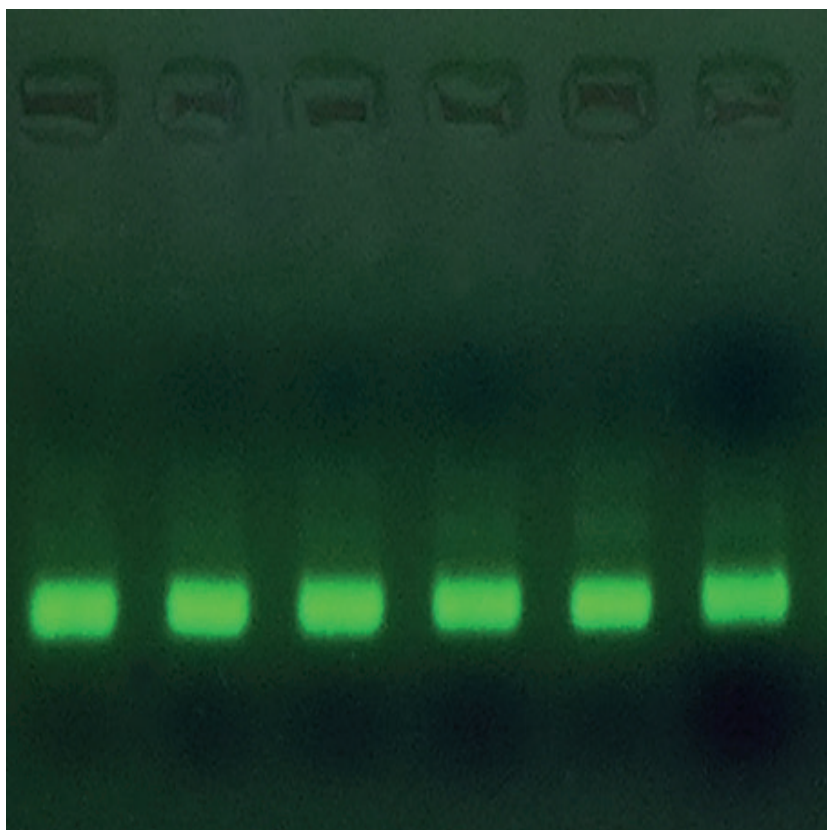


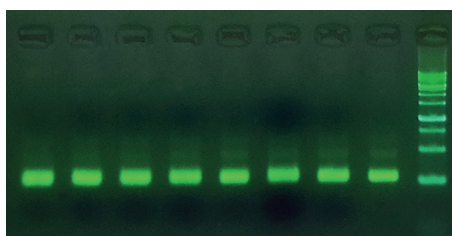
# Electrophoresis Products



DNA Green Viewer™  
Loading DuoColor™  
Loading TriColor™  
TBE buffer  
TAE buffer  
100bp Ladder

## DNA Green Viewer™

The Low Molecular Weight Protein Marker for SDS electrophoresis is a liquid mixture of six purified proteins ranging from 14,400 to 97,000 Dalton when used in denaturing polyacrylamide.

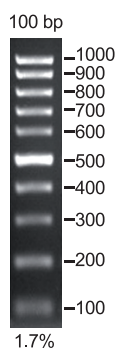


**DNA Green Viewer™ is as sensitive as EB**  
**Most economic safe nucleic acid stain**



## 100bp Ladder

The 100 bp DNA Marker consists of 11 DNA fragments ranging in size from reference on agarose gels, the 500 bp and 1000 bp are two to three times brighter than the other bands.



## 6X loading DuoColor™

The dye is used for loading DNA samples into gel electrophoresis wells and tracking migration during electrophoresis. See the below detail for an estimation of the migration distance of the tracking dyes contained in DuoColor 6x loading dye.

**Orange G dye runs faster than Bromophenol blue or xylene cyanol FF dyes in standard agarose gels.**

**Orange G dye migrates with DNA between 10 and 20 nucleotides long.**



## 6X loading TriColor™

The dye is used for loading DNA samples into gel electrophoresis wells and tracking migration during electrophoresis. See the below table for an estimation of the migration distance of the tracking dyes contained in TriColor 6x Loading Dye.

**Orange G Dye runs faster than Bromophenol blue or xylene cyanol FF dyes in standard agarose gels.**

**Orange G dye migrates with DNA between 10 and 20 nucleotides long.**



## 10X TBE buffer

Highly pure reagents have been also provided for preparation of electrophoresis buffers. These buffers are used to prepare agarose gels and as an electrophoresis running buffer for the separation of double-stranded DNA in agarose and polyacrylamide gels.



## 50X TAE buffer

Use 50x Tris/Acetic Acid/EDTA (TAE) for electrophoresis of nucleic acids.

Compatible with horizontal agarose and vertical polyacrylamide gels

Use with nondenatured and denatured DNA and nondenatured RNA

Unlike TBE, it does not interfere with the activity of some downstream enzymes such as ligases

Made with 18  $\Omega$  water

