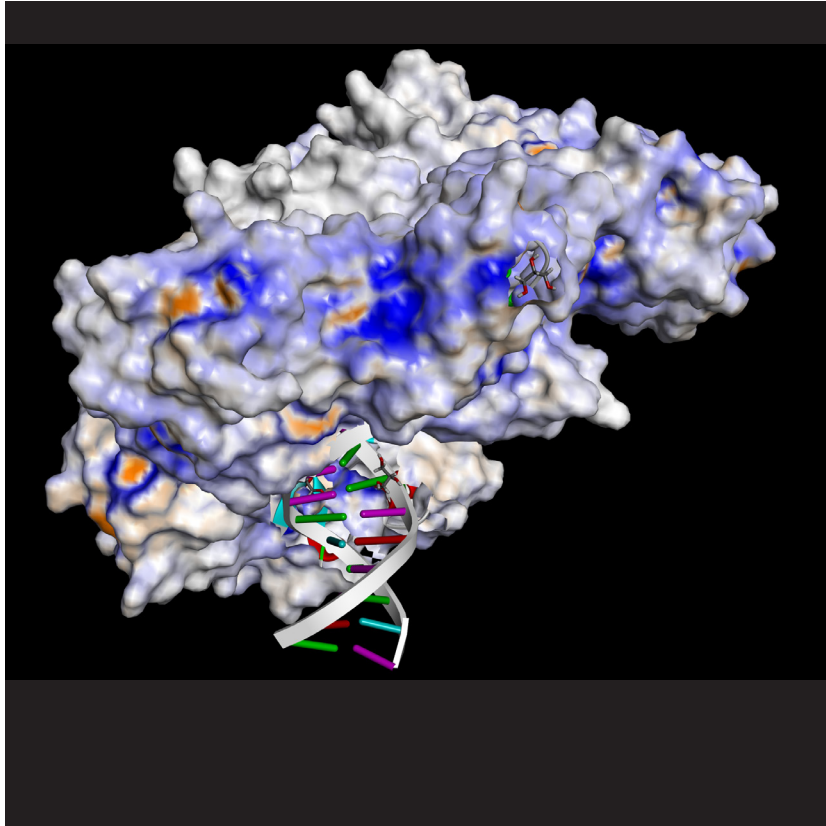


Protein

Protein Assay

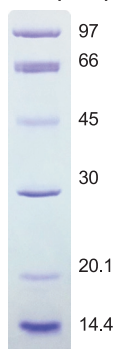


Low Molecular Weight Protein Marker
Chemiluminescence Detection kit
BCA Protein Quantification Kit
Ni-IDA Column Kit

Low Molecular Weight Protein Marker

The Low Molecular Weight Protein Marker for SDS electrophoresis is a liquid mixture of six purified proteins ranging from 14,400 to 97,000 Dalton when used in denaturing polyacrylamide.

Mw (kDa) 12.5%

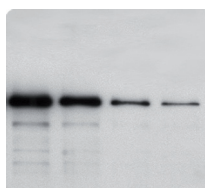


Chemiluminescence Detection kit

This kit is recommended for horseradish peroxidase (HRP)-based Western Blotting procedures. Provided as a two-component system, Solution A and Solution B.

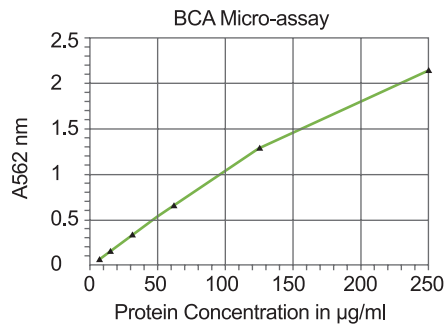
The chemiluminescent light emitting can be quantitatively detected via regular autoradiograph film, CCD camera, or chemiluminescence reading device.

Suitable for western blotting and dot blot
More sensitive than DAB and Alpha-naphtol



BCA (Bicinchoninic acid) Protein Quantification Kit

BCA kit utilizes a copper(Cu^{2+}) salt which can be reduced to the cuprous state by protein(s). The BCA Protein Assay is suitable for measuring of protein concentration in the range of 5-1000 $\mu\text{g/ml}$.

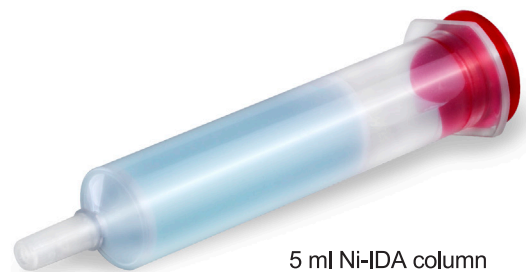
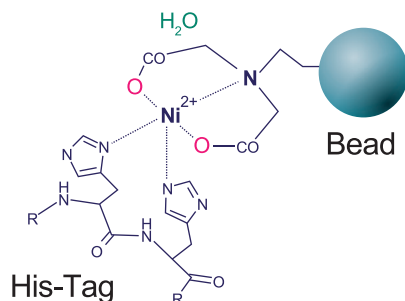


- Less protein-to-protein variation.**
- Less affected by ionic and nonionic detergents.**
- Detection down to 5 $\mu\text{g/ml}$ with the enhanced protocol.**



Ni-IDA Column for purification of His-tag proteins Kit

Ni-IDA beads enable fast and convenient purification of recombinant polyhistidine-tagged proteins by immobilized metal ion affinity chromatography (IMAC). This gel is rechargeable for more than ten times without reduction in the yield.



- Purification in non-denaturing condition.**
- Purification in denaturing condition.**
- High yield and specific.**
- Very economic.**